

## User Manual: HTP501 Touch Panel

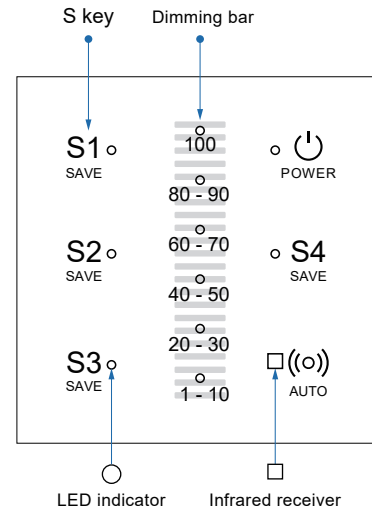
### 1 Product Introduction

The HTP501 touch panel, built on the ZigBee 3.0 standard, is designed for indoor lighting control. Seamlessly connecting with various lamps, it facilitates simple grouping through the HRCD01 infrared remote control. Elevate your lighting control with this user-friendly solution.

Input voltage	AC 200-240V~ 50/60Hz
Input current	5mA
Standby power	<0.5W
Remote control distance	<2.5m
Radio frequency	2.4GHz
Communication distance	15m
Operating temperature	-20°C ~ 55°C
Product size	86x86x38mm

V1.0

### 2 Panel Interface



Action Key	Short press	Press and hold for 3 seconds	Slide	Remark	
				LED indicator	Key sound
POWER	Power On/ Off	—	—	After a quick press, the related LED stays on; others turn off.	With the key sound enabled, a single sound plays upon pressing a key. Disabling the key sound results in silence.
S1	Restore the saved brightness level	Save the current brightness of the dimming bar using the S key	—		
S2					
S3					
S4	—	—	—	Short press: LEDs blink once, then turn off. Long press: S1 blinks once.	—
AUTO	Press to restore sensor-controlled dimming	Turn On/ Off Key Sound	—		
Dimming bar	Press and hold the S key to save the current brightness level.	—	Slide to dim, and hold down the S key to save the current brightness level.	The indicator light shows the successful execution's brightness.	—

V1.0

### 3 Panel Operation

#### 3.1 Powering On

Upon powering on the panel, all LED indicators will flash, accompanied by a single sound.

#### 3.2 Adding Panels to a Group

To add the panel to a group using the HRCD01 remote control:

- Ensure the device is within the effective distance of the remote control.
- Press the key 5 of HRCD01 remote control.
- Upon successful group joining, all LED indicators will flash, and you'll hear two beeps.

#### 3.3 Interrupting Manual Control

If you use the panel's dimming bar to adjust the lights' brightness manually, this will temporarily interrupt the sensor's operation. To restore sensor control:

- Use the AUTO button on either the HRCD01 remote control or touch panel.
- Turn the lamp off and then back on.
- Re-activate the sensor through the remote control settings menu or app.

V1.0

#### 3.4 Locking the Panel

To prevent accidental resetting of the panel via the remote control, you have the option to lock a configured panel using the remote control's locking feature.

When locked, the panel indicator lights will flash, accompanied by a single beep sound. For detailed instructions on using the locking feature, please consult the remote control user guide.

#### 3.5 Unlocking the Panel

To unlock the panel, you have two methods available: using the remote control or performing a forced removal.

Remote Control: Refer to the remote control user guide for step-by-step instructions on unlocking the panel.

Forced Removal: If necessary, perform a forced removal as follows:

- Power off the panel.
- Power it on continuously for a total of four times.
- On the fifth power-on, the panel will unlock.

Once successfully unlocked, LED indicators will flash, accompanied by three beep sounds.

#### 3.6 Resetting a Device

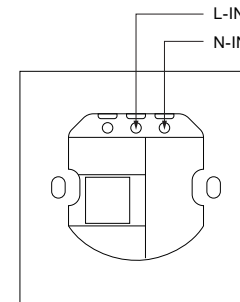
To reset the panel, utilize the reset key on the HRCD01 remote control. Upon resetting, all LED indicators will blink three times, accompanied by three beep sound, and the panel will automatically exit the group.

V1.0

### 4 Wiring Instructions

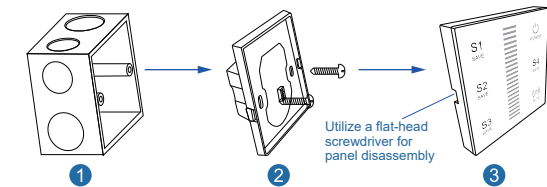
When connecting the power cable, please take note: the neutral line (N-IN) and the medium indirect live line (L-IN) should be connected on the right side. Ensure the power is turned off while connecting cables. Do not attempt to install cables while power is active.

For visual guidance, please refer to the provided wiring diagram:



V1.0

### 5 Installation Guide



Mounting Screw Size: M4x25mm (nut diameter should be less than 6.5mm).

Follow these steps for a successful installation:

1. Carefully position the 86 boxes within the wall and securely fasten them.
2. Insert the bottom cover of the connected power cable into the 86 box, ensuring proper alignment, and securely fasten the screws. Please note that during bottom cover installation, ensure the outlet is facing upward.
3. Gently affix the panel onto the bottom cover, pressing it into place until installation is complete.

For visual reference, please consult the provided installation diagram.

V1.0