

User Manual: HWSC05 6-Key Switch Panel

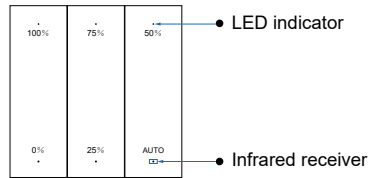
1 Product Introduction

Presenting the HWSC05-MWZ-6K: A 6-key switch panel utilizing ZigBee 3.0 protocol. Tailored for indoor lighting control, it seamlessly pairs with a series of lamps through an infrared remote control (HRCD01). Simplify your lighting experience with this intuitive device.

Input voltage	AC 200-240V~ 50/60Hz
Input current	3mA
Standby power	<0.5W
Remote control distance	<2.5m
Radio frequency	2.4GHz
Communication distance	15m
Operating temperature	-20°C ~ 70°C
Product size	86x86x38mm

V1.0

2 Key Interface



Action Key	Short press	Remark
100%	Set the brightness to 100%	After a short press, the associated LED indicator will stay illuminated, while the other indicators will switch off.
75%	Set the brightness to 75%	
50%	Set the brightness to 50%	
25%	Set the brightness to 25%	
0%	Turn off	
AUTO	sensor reactivated	After a short press, all LED indicators will blink once and then extinguish.

V1.0

3 Panel Operation

3.1 Power-On Initialization

When the device powers on, all LED indicators will blink once by default.

3.2 Adding to Group with HRCD01 Remote Control

To add the device to a group using the HRCD01 remote control, follow these steps:

- Ensure the device is within the effective distance of the remote control.
- Press the key 5 of HRCD01 remote control.
- Upon successful group joining, all LED indicators on the panel will blink twice.

3.3 Interrupting Sensor Control and Manual Control

When switching or dimming the luminaire using the device's dimming key (%), the manual control will temporarily interrupt the sensor's operation. To restore sensor control to the interrupted luminaire, you have several options:

- Use the AUTO button on either the HRCD01 remote control or the switch panel.
- Turn the lamp off and then back on.
- Re-activate the sensor through the remote control settings menu or app.

V1.0

3.4 Locking the Panel

To prevent accidental resetting of the panel via the remote control, you can lock a configured panel using the remote control's locking feature. Refer to the remote control user guide for specific instructions.

3.5 Unlocking the Panel

If you need to unlock the panel, you can do so using the remote control. Refer to the remote control user guide for specific instructions.

3.6 Resetting the Panel

To reset the panel, utilize the reset key on the HRCD01 remote control. Upon resetting, all LED indicators will blink three times, and the panel will automatically exit the group.

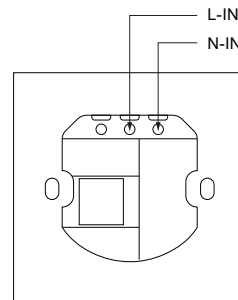
V1.0

4 Wiring Guide

When connecting the power cable, please take note: the neutral line (N-IN) and the medium indirect live line (L-IN) should be connected on the right side.

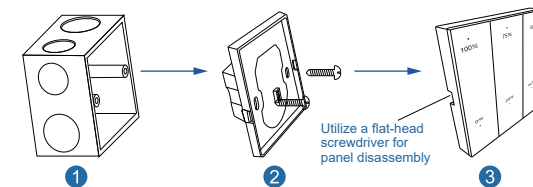
Ensure the power is turned off while connecting cables. Do not attempt to install cables while power is active.

For visual guidance, please refer to the provided wiring diagram:



V1.0

5 Installation Guide



Mounting screw size: M4x25mm (nut diameter less than 6.5mm).

Follow these steps for a successful installation:

1. Carefully position the 86 boxes within the wall and securely fasten them.
2. Insert the bottom cover of the connected power cable into the 86 box, ensuring proper alignment, and securely fasten the screws. Please note that during bottom cover installation, ensure the outlet is facing upward.
3. Gently affix the panel onto the bottom cover, pressing it into place until installation is complete.

For visual reference, please consult the provided installation diagram.

V1.0